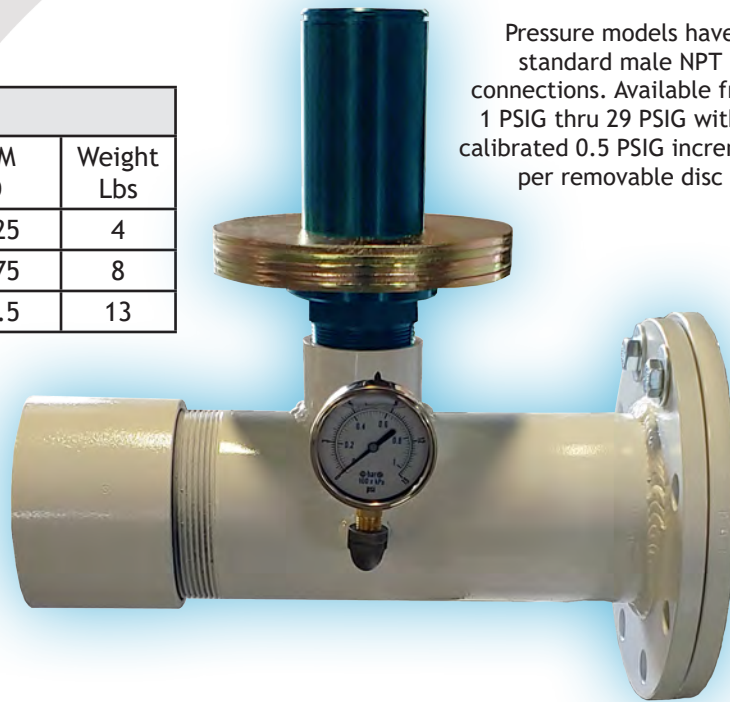
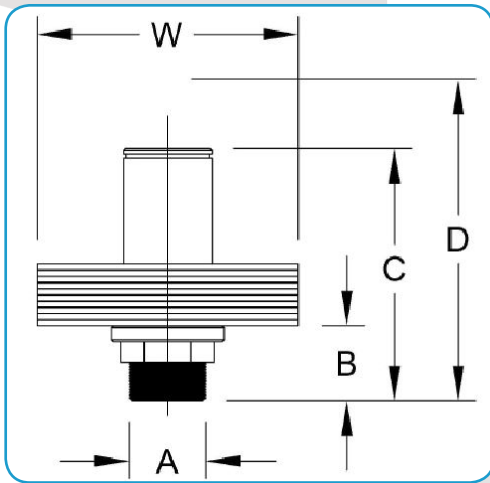


Weighted Relief Valves for Pressure and Vacuum Applications

A weighted relief valve (WRV) protects your blower package by allowing excess air pressure to relieve at a predetermined set point. This design is very efficient, consistent and it will provide years of maintenance free operation. The weighted relief valve is easily installed in the vertical position on the discharge side of the silencer. The valve body is available in 2", 3", or 4" NPT connection sizes. The set point is controlled by removable weights which are available in either 0.5 PSI or 1.0 PSI increments.

Valve Assy

Part Number	NPT A	DIM B	DIM C	DIM D	Weight Lbs
2WRV	2"	2.31	7.81	9.25	4
3WRV	3"	3.18	8.70	9.75	8
4WRV	4"	3.34	9.83	10.5	13



Pressure models have standard male NPT connections. Available from 1 PSIG thru 29 PSIG with a calibrated 0.5 PSIG increment per removable disc

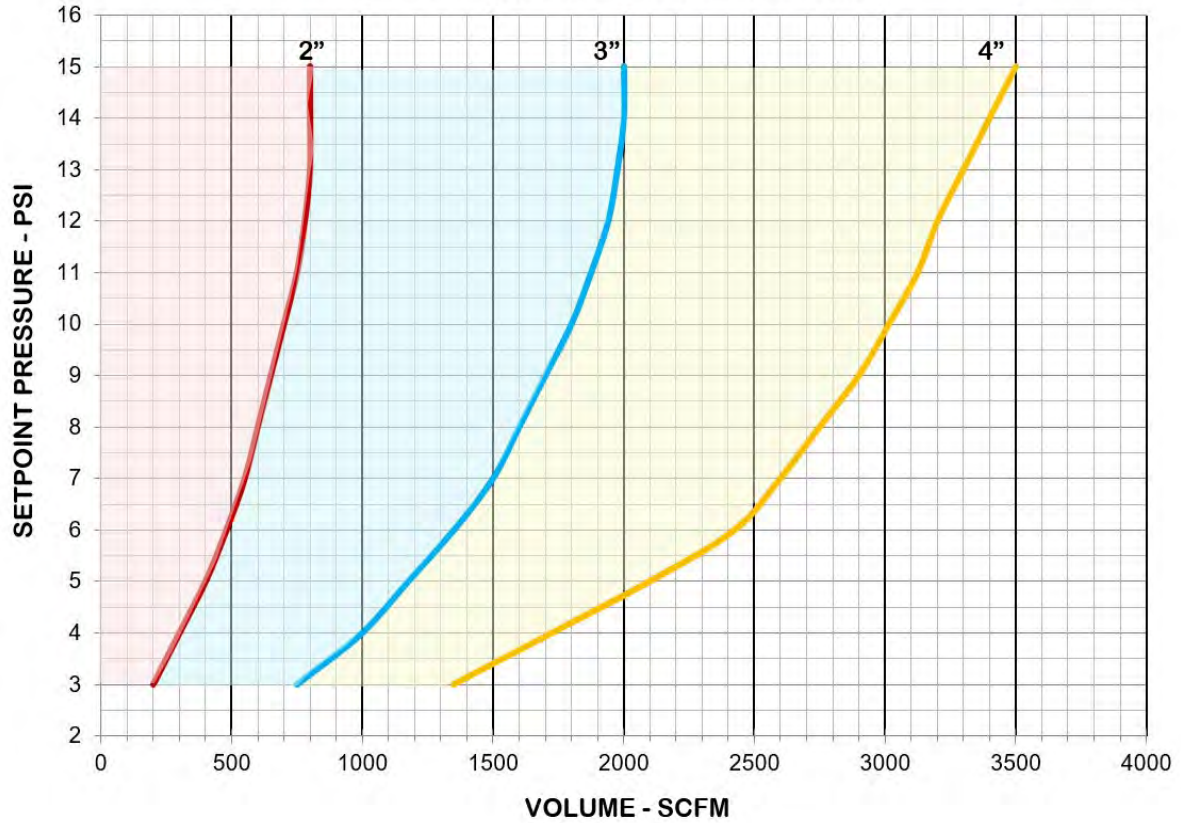
Weights

Part Number	Diameter W inches	Shipping Wgt in lbs.
2W05PSI	6.75	1.50
2W1PSI	9.12	3.00
3W05PSI	10.50	3.75
3W1PSI	14.37	7.85
4W05PSI	13.50	5.75
4W1PSI	18.50	12.60

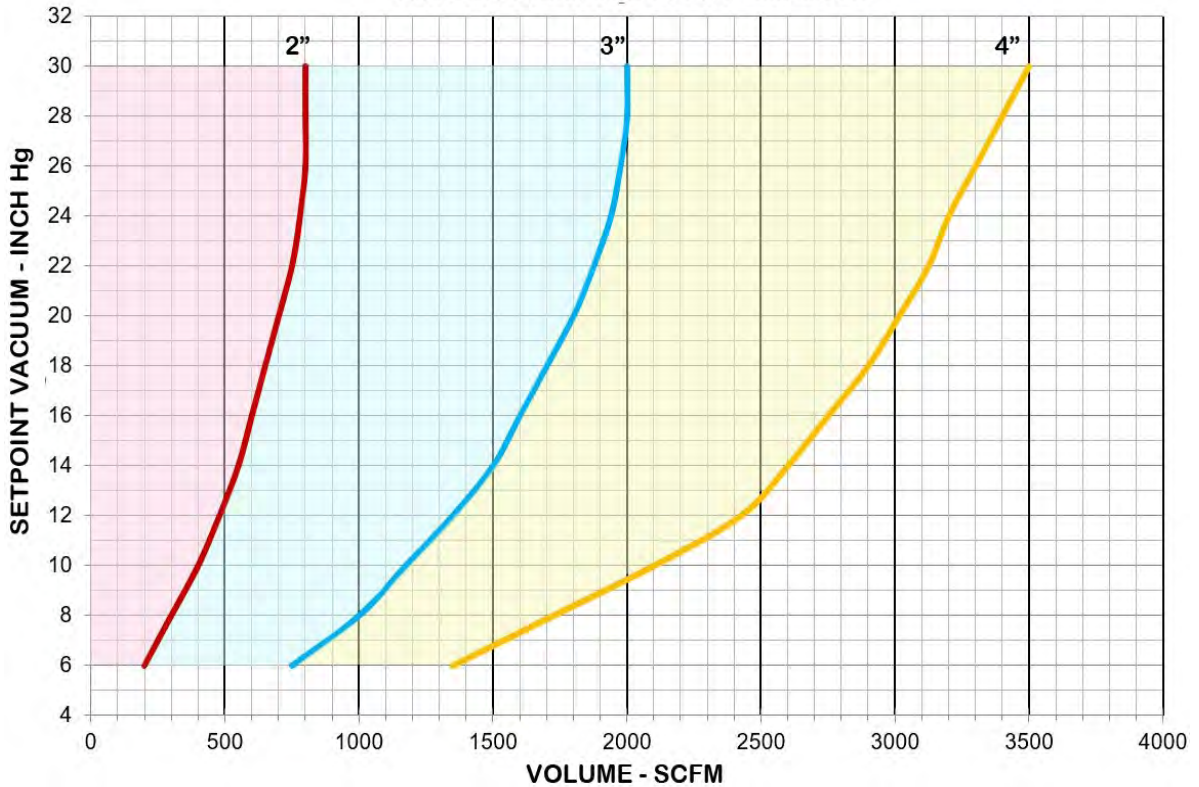
Vacuum canisters have standard female NPT connections. Available from 2"Hg thru 30"Hg with a calibrated 1"Hg increment per removable disc



PRESSURE WEIGHTED RELIEF CAPACITY



VACUUM WEIGHTED RELIEF CAPACITY



VACUUM Weighted Relief Valve

Each valve body is equal to 2”Hg.

Each 0.5 weight is equal to 1”Hg.

Each 1.0 weight is equal to 2”Hg

Each valve body can hold max (28) weights.

STANDARD VAC WRV CONFIG & COMBO VAC Canister (CVAC)

Vacuum Setting (inHg)	Number of Weights	
	1 ^{PSI}	0.5 ^{PSI}
2	0	0
3	0	1
4	1	0
5	1	1
6	2	0
7	2	1
8	3	0
9	3	1
10	4	0
11	4	1
12	5	0
13	5	1
14	6	0
15	6	1
16	7	0
17	7	1
18	8	0
19	8	1
20	9	0
21	9	1
22	10	0
23	10	1
24	11	0
25	11	1
26	12	0
27	12	1

Vacuum Canister (Not CVAC)

Number of 0.5 ^{PSI} Weights
0
1
2
3
4
5
6
7
8
9
10
11
12
13
14
15
16
17
18
19
20
21
22
23
24
25

PRESSURE Weighted Relief Valve

Each valve body is equal to 1 PSIG.

Each 0.5 weight is equal to 0.5 PSIG

Each 1.0 weight is equal to 1 PSIG.

Each valve body can hold max (28) weights.

STANDARD PRESSURE WRV CONFIGURATION

Pressure Setting (PSIG)	Number of Weights	
	1 ^{PSI}	0.5 ^{PSI}
1.0	0	0
1.5	0	1
2.0	1	0
2.5	1	1
3.0	2	0
3.5	2	1
4.0	3	0
4.5	3	1
5.0	4	0
5.5	4	1
6.0	5	0
6.5	5	1
7.0	6	0
7.5	6	1
8.0	7	0
8.5	7	1
9.0	8	0
9.5	8	1
10.0	9	0
10.5	9	1
11.0	10	0
11.5	10	1
12.0	11	0
12.5	11	1
13.0	12	0
13.5	12	1
14.0	13	0
14.5	13	1
15.0	14	0

Pressure Canister

Number of 0.5 ^{PSI} Weights
0
1
2
3
4
5
6
7
8
9
10
11
12
13
14
15
16
17
18
19
20
21
22
23
24
25
26
27
28